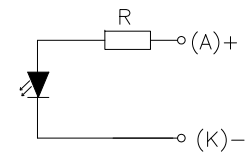
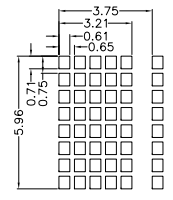
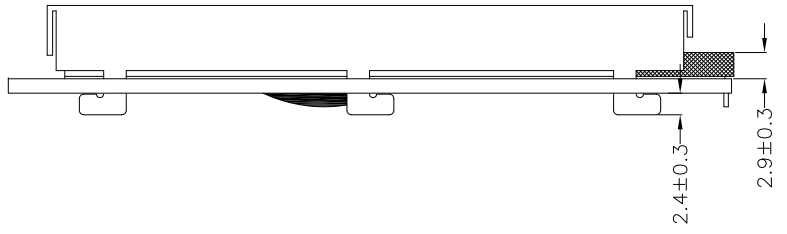


PIN ASSIGNMENT

PIN	SYMBOL
1	VSS
2	VDD
3	VO
4	RS
5	R/W
6	E
7	DB0
8	DB1
9	DB2
10	DB3
11	DB4
12	DB5
13	DB6
14	DB7
15	LEDA
16	LEDK



CIRCUIT DIAGRAM

NOTES:

1. LCD TYPE: STN (YELLOW GREEN), TRANFLECTIVE, POSITIVE.
2. OPERATING VOLTAGE: VDD=5.0V, VOP=4.7V.
3. VIEWING DIRECTION: 6:00 O'CLOCK.
4. DRIVE METHOD: 1/8 DUTY, 1/5 BIAS.
5. CONTROLLER: AIP31006 OR COMPATIBLE.  $\triangle$
6. OPERATING TEMP.: -20°C ~ 70°C.
7. STORAGE TEMP.: -30°C ~ 80°C.
8. LED BACKLIGHT: YELLOW GREEN LED, IF=15mA, VF=5.0V.
9. GENERAL TOLERANCE: ±0.2MM.
10. ROHS COMPLIANT.



MULTI-INNO TECHNOLOGY CO., LTD.

02	CORRECT THE FRAME DIMENSIONS. MODIFY THE CONTROLLER P/N. OPTIMIZE THE DRAWING.	RITA	2021.04.02	DRAWN BY:	CAROL	2015.06.09		MODULE P/N:
01	FIRST ISSUE	CAROL	2015.06.09	CHECKED BY:			SCALE : 1/1	M1601S
VER.	REVISED DESCRIPTION	REVISER	DATE	APPROVED BY:			UNIT: mm	DESCRIPTION:
				VERSION NO:	02		SHEET NO.: 1/1	CHARACTER MODULE